

# Standard Incentives

For Ameren Missouri's Commercial & Industrial electric customers



[AmerenMissouri.com/BizSavers](https://AmerenMissouri.com/BizSavers)

Standard Incentives V. 1

Effective 3/1/19

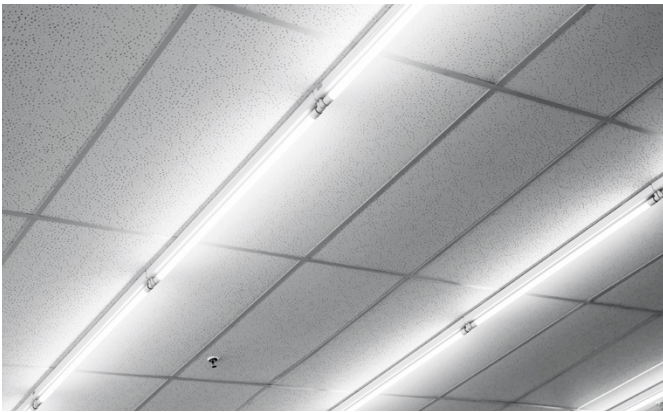
Visit [AmerenMissouri.com/BizSavers](https://AmerenMissouri.com/BizSavers) to confirm current rates



## Standard Pre-Approval Incentives

While most Standard Incentive measures can be purchased and installed without pre-approval, the BizSavers® program also offers several standard pre-approval measures that can take your energy savings even further. These lighting upgrades are incentivized based on the amount of energy savings and must receive pre-approval prior to purchase or installation.

To get started with a Standard Pre-Approval project, contact the BizSavers program or locate a registered Trade Ally at [www.TradeAllyNetwork.com](http://www.TradeAllyNetwork.com).



## Interior Linear Fluorescent One-for-One Replacements

Existing Equipment	LED Type A (Plug & Play)	LED Hybrid	LED Type B (Direct Wire)	LED Type C (External Driver)
Fluorescent T12	20¢ per watt reduced	20¢ per watt reduced	30¢ per watt reduced	30¢ per watt reduced
Fluorescent T8				
Fluorescent T5				

- Replacements will be incentivized on a one-for-one basis
- A “Direct Wire” Lamp uses the existing tombstones and bypasses the ballast
- New lamps must have a lamp life of ≥ 50,000 hours

## Interior Lighting Redesign

Existing Equipment	Efficient Equipment	Incentive
Linear Fluorescent T12, T8 or T5 or HID lamps	LED Fixture replacement without network controls	40¢ per watt reduced
Linear Fluorescent T12, T8 or T5 or HID lamps	LED Fixture replacement with network controls	50¢ per watt reduced

- This measure only applies when installing new fixtures
- To qualify, supporting documentation showing the design is suitable for the space must be submitted
- If the existing space is changing purpose, this measure would not apply
- Networked Controls, at minimum, consist of an intelligent network of individually addressable luminaires and control devices, allowing for application of multiple control strategies, programmability, building level control, zoning and rezoning using software



## Standard Fast-Track Incentives

Standard Fast-Track Incentives are the quick and easy way to receive cash for your energy efficiency upgrades. Projects with all Standard Fast-Track measures do not require pre-approval unless the incentive is anticipated to be more than \$10,000. Projects that include even one pre-approval measure require pre-approval of the entire project before equipment purchase or installation. All Standard Fast-Track Incentive applications must be submitted to the BizSavers program within 180 days of equipment invoice date. Please refer to the Standard Program Guidelines and Terms & Conditions for full program rules. Go to [AmerenMissouri.com/BizSavers](http://AmerenMissouri.com/BizSavers) to download the incentive application and program guidelines or connect with us directly by calling toll-free 866.941.7299 or emailing [BizSavers@Ameren.com](mailto:BizSavers@Ameren.com).



## Interior Lighting: Linear Fluorescent One-for-One Replacements

Existing Equipment	LED Type A (Plug & Play)	LED Hybrid	LED Type B (Direct Wire <sup>1</sup> )	LED Type C (External Driver)	LED Retrofit Kit <sup>2</sup>	LED Fixture Replacement
Fluorescent T12	\$2.00 per lamp	\$2.00 per lamp	\$4.00 per lamp	\$4.00 per lamp	35¢ per watt reduced	40¢ per watt reduced
Fluorescent T8	\$2.00 per lamp	\$2.00 per lamp	\$4.00 per lamp	\$4.00 per lamp		
Fluorescent T5	\$5.00 per lamp	\$5.00 per lamp	\$8.00 per lamp	\$8.00 per lamp		
				Incentive with Network Controls <sup>3</sup> added	45¢ per watt reduced	50¢ per watt reduced

- Replacements will be incentivized on a one-for-one basis
- New lamp, kit or fixture must have a lamp or fixture life of  $\geq 50,000$  hours
- Incentives are based on 4-foot linear fluorescent lamps. All other lengths of linear fluorescent replacement lamps are eligible for these incentives at prorated incentive amounts

<sup>1</sup>A "Direct Wire" Lamp uses the existing tombstones and bypasses the ballast

<sup>2</sup>Equipment is considered a retrofit kit when the existing fixture body is used but the tombstones are removed or abandoned

<sup>3</sup>Networked Controls, at minimum, consist of an intelligent network of individually addressable luminaires and control devices, allowing for application of multiple control strategies, programmability, building level control, zoning and rezoning using software

## Interior Lighting: Incandescent and Halogen Replacements

Existing Equipment	Efficient Equipment	Incentive
A-Series $\geq 40$ watts <sup>1</sup>	LED $\leq 20$ watts	\$2.00 per lamp
Halogen MR-16, $\geq 35$ watts	LED $\leq 13$ watts	\$5.00 per lamp
Halogen BR/R $\geq 45$ watts	LED $\leq 14$ watts BR/R	\$5.00 per lamp
Halogen PAR $\geq 48$ watts	LED $\leq 20$ watts PAR	\$5.00 per lamp

<sup>1</sup>Incandescent replacements are eligible for this incentive, however halogen equivalent wattage will be used to determine energy savings.



## Interior Lighting: HID Replacements

Existing Equipment	Efficient Equipment	Incentive
Interior HID	LED lamp (using existing ballast)	25¢ per watt reduced
Interior HID	Direct wire (using existing socket) <sup>1</sup>	30¢ per watt reduced
Interior HID	New LED fixture	40¢ per watt reduced
Interior HID	New LED fixture with Networked Controls <sup>2</sup>	50¢ per watt reduced

<sup>1</sup>Direct wire is a retrofit that uses the same fixture, but bypasses the existing ballast

<sup>2</sup>Networked Controls, at minimum, consist of an intelligent network of individually addressable luminaires and control devices, allowing for application of multiple control strategies, programmability, building level control, zoning and rezoning using software



## Exit Sign Replacements

Existing Equipment	Efficient Equipment	Incentive
Incandescent Exit Sign	LED or Electroluminescent $\leq 5$ watts	\$16 per sign
CFL Exit Sign	LED or Electroluminescent $\leq 5$ watts	\$16 per sign



## Cooking

Existing Equipment	Efficient Equipment	Incentive
3 Pan non-ENERGY STAR Steam Cooker	3 Pan ENERGY STAR Electric Steam Cooker	\$671.00 per steam cooker
4 Pan non-ENERGY STAR Steam Cooker	4 Pan ENERGY STAR Electric Steam Cooker	\$729.00 per steam cooker
5 Pan non-ENERGY STAR Steam Cooker	5 Pan ENERGY STAR Electric Steam Cooker	\$788.00 per steam cooker
6 Pan non-ENERGY STAR Steam Cooker	6 Pan ENERGY STAR Electric Steam Cooker	\$910.00 per steam cooker
Non-ENERGY STAR Hot Holding Cabinet ( $\geq 28$ cubic feet)	ENERGY STAR Hot Holding Cabinet ( $\geq 28$ cubic feet)	\$397.00 per cabinet

## Refrigeration

Existing Equipment	Efficient Equipment	Incentive
Non-ENERGY STAR unit	ENERGY STAR $0 < V < 15$ - Vertical Closed - Glass Door Freezer	\$85.00 per freezer
Non-ENERGY STAR unit	ENERGY STAR $15 \leq V < 30$ - Vertical Closed - Glass Door Freezer	\$160.00 per freezer
Non-ENERGY STAR unit	ENERGY STAR $30 \leq V < 50$ - Vertical Closed - Glass Door Freezer	\$270.00 per freezer
Non-ENERGY STAR unit	ENERGY STAR $V \geq 50$ - Vertical Closed - Glass Door Freezer	\$427.00 per freezer
Non-ENERGY STAR unit	ENERGY STAR $0 < V < 15$ - Vertical Closed - Solid Door Freezer	\$35.00 per freezer
Non-ENERGY STAR unit	ENERGY STAR $15 \leq V < 30$ - Vertical Closed - Solid Door Freezer	\$70.00 per freezer
Non-ENERGY STAR unit	ENERGY STAR $30 \leq V < 50$ - Vertical Closed - Solid Door Freezer	\$121.00 per freezer
Non-ENERGY STAR unit	ENERGY STAR $V \geq 50$ - Vertical Closed - Solid Door Freezer	\$225.00 per freezer
Non-ENERGY STAR unit	ENERGY STAR Horizontal Closed - Solid or Glass Door Freezer - All Volumes	\$390.00 per freezer
No Controls	Anti-Sweat Heater Controls (Freezer)	\$68.00 per controller
No Controls	Anti-Sweat Heater Controls (Refrigerator)	\$50.00 per controller
Non-ENERGY STAR unit	ENERGY STAR $0 < V < 15$ - Vertical Closed - Solid Door Refrigerator	\$28.00 per refrigerator
Non-ENERGY STAR unit	ENERGY STAR Horizontal Closed - Solid or Glass Door Refrigerator - All Volumes	\$90.00 per refrigerator

## Water Heating

Existing Equipment	Efficient Equipment	Incentive
Electric Resistance Commercial Water Heater	2.9-14.6 kW (10 to 50 MBH) Heat Pump Water Heater $\geq 3.0$ COP	\$1,057.00 per heat pump water heater
Electric Resistance Commercial Water Heater	14.7-29.3 kW (50 to 100 MBH) Heat Pump Water Heater $\geq 3.0$ COP	\$2,664.00 per heat pump water heater
Electric Resistance Commercial Water Heater	29.4-87.9 kW (100 to 300 MBH) Heat Pump Water Heater $\geq 3.0$ COP	\$7,052.00 per heat pump water heater
Electric Resistance Commercial Water Heater	88-146.5 kW (300 to 500 MBH) Heat Pump Water Heater $\geq 3.0$ COP	\$14,000.00 per heat pump water heater



## HVAC

Existing/Baseline Equipment	Efficient Equipment	Incentive
Non-Programmed Thermostat	Learning/Smart Thermostat	\$150.00 per thermostat
.96 kW/ton IPLV Air-Cooled Chiller (<150 tons)	High-Efficiency Air-Cooled Chiller	\$2.20 per ton per 0.01 kW/ton IPLV improvement
.94 kW/ton IPLV Air-Cooled Chiller (≥150 tons)		

- A learning thermostat is one that has the capability to sense occupancy or modify operating parameters without user input
- The air-cooled chiller measure is intended for single chiller systems (back-up chillers will not qualify)
- To qualify for the air-cooled chiller, the chiller must be able to serve 100% of the intended cooling load

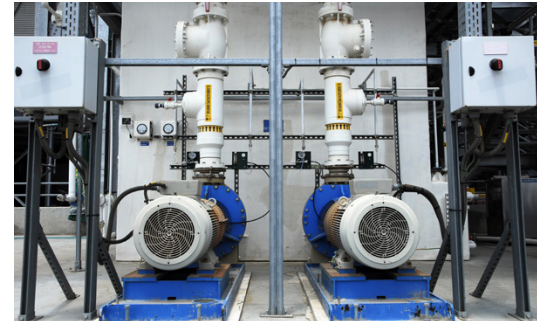
Existing/Baseline Equipment	Efficient Equipment	Incentive
11 EER Packaged DX	High-Efficiency Packaged DX 135 - 240kbtu	\$20.00 per ton per EER improvement
10 EER Packaged DX	High-Efficiency Packaged DX 240 - 760kbtu	\$20.00 per ton per EER improvement
9.7 EER Packaged DX	High-Efficiency Packaged DX > 760kbtu	\$20.00 per ton per EER improvement
13 SEER Packaged DX	High-Efficiency Packaged DX < 65kbtu	\$13.00 per ton per SEER improvement
11.2 EER Packaged DX	High-Efficiency Packaged DX 65 - 135kbtu	\$20.00 per ton per EER improvement
11 EER Air Source Heat Pump (ASHP)	High-Efficiency ASHP 65 - 135kbtu	\$19.00 per ton per EER improvement
10.6 EER Air Source Heat Pump (ASHP)	High-Efficiency ASHP 135 - 240kbtu	\$19.00 per ton per EER improvement
9.5 EER Air Source Heat Pump (ASHP)	High-Efficiency ASHP >240kbtu	\$19.00 per ton per EER improvement
13 SEER Air Source Heat Pump (ASHP)	High-Efficiency ASHP <65kbtu	\$12.00 per ton per EER improvement

- "High Efficiency" is considered a unit more efficient than IECC 2009

## Variable Frequency Drives

Existing Equipment	Efficient Equipment	Incentive
Chilled Water Pump (1-75HP) without VFD	Variable Frequency Drive	\$100.00 per horsepower
Hot Water Pump (1-75HP) without VFD	Variable Frequency Drive	\$100.00 per horsepower
Pool Pump without VFD	Variable Frequency Drive	\$100.00 per horsepower
HVAC Fan (1-100HP) without VFD	Variable Frequency Drive	\$80.00 per horsepower

- Existing motor must not already have a VFD
- System must have a variable or reduced load
- Installation to have necessary control points and parameters



## Custom Incentives

The savings don't stop at the Standard Incentives. If you have an energy-saving upgrade in mind but don't see it on this list, chances are it will qualify for the BizSavers Custom Incentives Program. All Custom Incentives require pre-approval prior to equipment purchase and installation and projects will be subject to an engineering review to ensure that measures satisfy program requirements. Incentives are broken down by end use (savings type) in the table to the right, and engineering assistance is available to all customers and Trade Allies upon request.

Have questions or need more information about the Custom Incentives Program? Contact us:

Toll free: 866.941.7299

Email: [BizSavers@Ameren.com](mailto:BizSavers@Ameren.com)

Web: [AmerenMissouri.com/BizSavers](http://AmerenMissouri.com/BizSavers)

End Use (Savings Type)	Incentive Rate (per kWh saved)
Cooling	18¢
Building Shell	12¢
HVAC	12¢
Cooking	9¢
Water Heating	9¢
Interior Lighting	8¢
Compressed Air	8¢
Miscellaneous	7¢
Motors	7¢
Process	7¢
Refrigeration	6¢



For more information about Ameren Missouri's **BizSavers** Energy Efficiency Program Standard Incentives, please contact:

Toll free: 866.941.7299

Email: [BizSavers@Ameren.com](mailto:BizSavers@Ameren.com)

Web: [AmerenMissouri.com/BizSavers](http://AmerenMissouri.com/BizSavers)

